

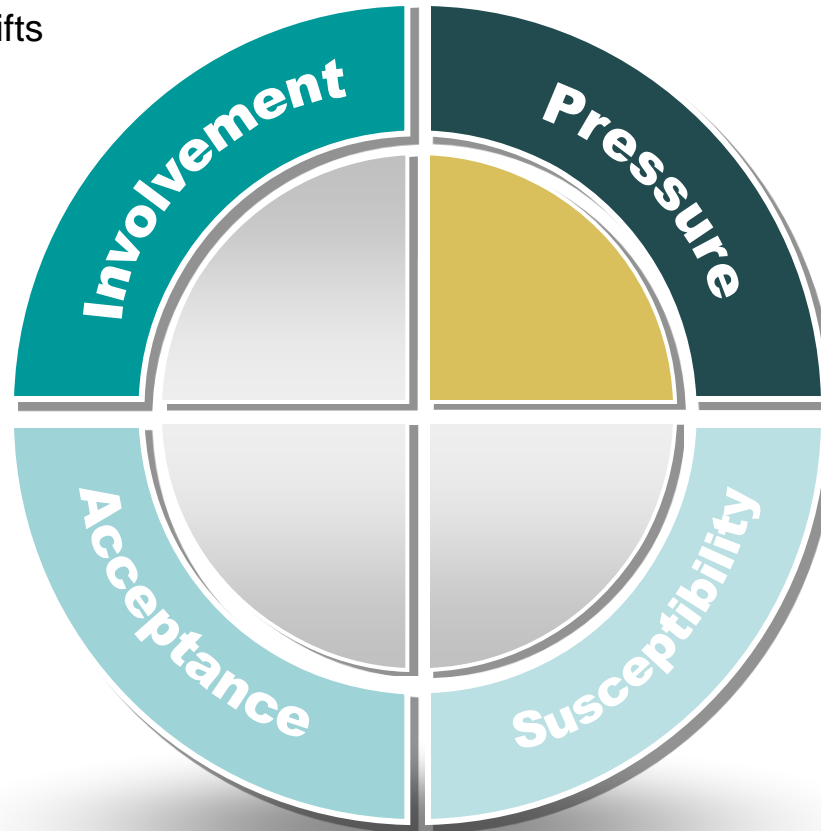
# Corruption Monitoring System: Administrative Corruption 1998-2010

## Trends in corruption behaviour of citizens (general population)

### Activities

**Giving** of money, favors or gifts in the last year by citizens.

**Asking** for money gifts or favours. Hints that “something” is expected.

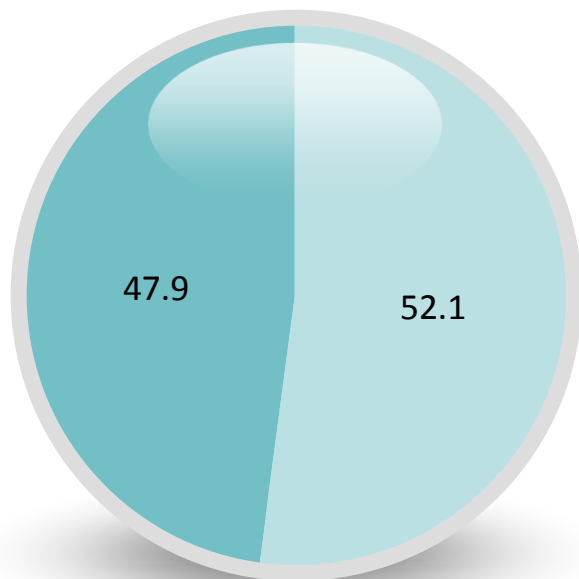


### Prerequisites

**Acceptance** (as right) of the integrity standards for civil servants.

**Readiness** to give or accept money, gifts or favours.

## Contacts with the administration (in the last year)

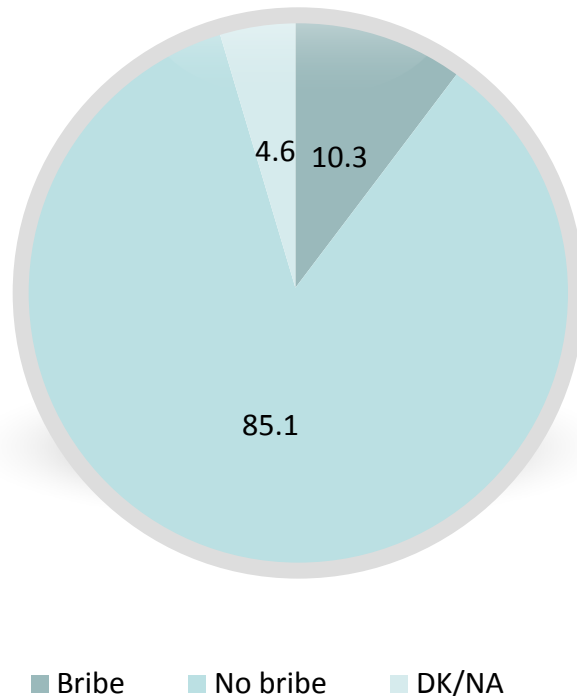


■ No contact ■ Contact

	Contact	No contact
Sofia	49.6	50.4
Big city	51.3	48.7
Small town	40.6	59.4
Village	47.8	52.2
Men	48.5	51.5
Women	47.4	52.6
University	58.3	41.7
Collage	56.9	43.1
Secondary	48.6	51.4
Basic	37.2	62.8
Primary	27.3	72.7

## Involvement in corruption transactions (last 3 months)

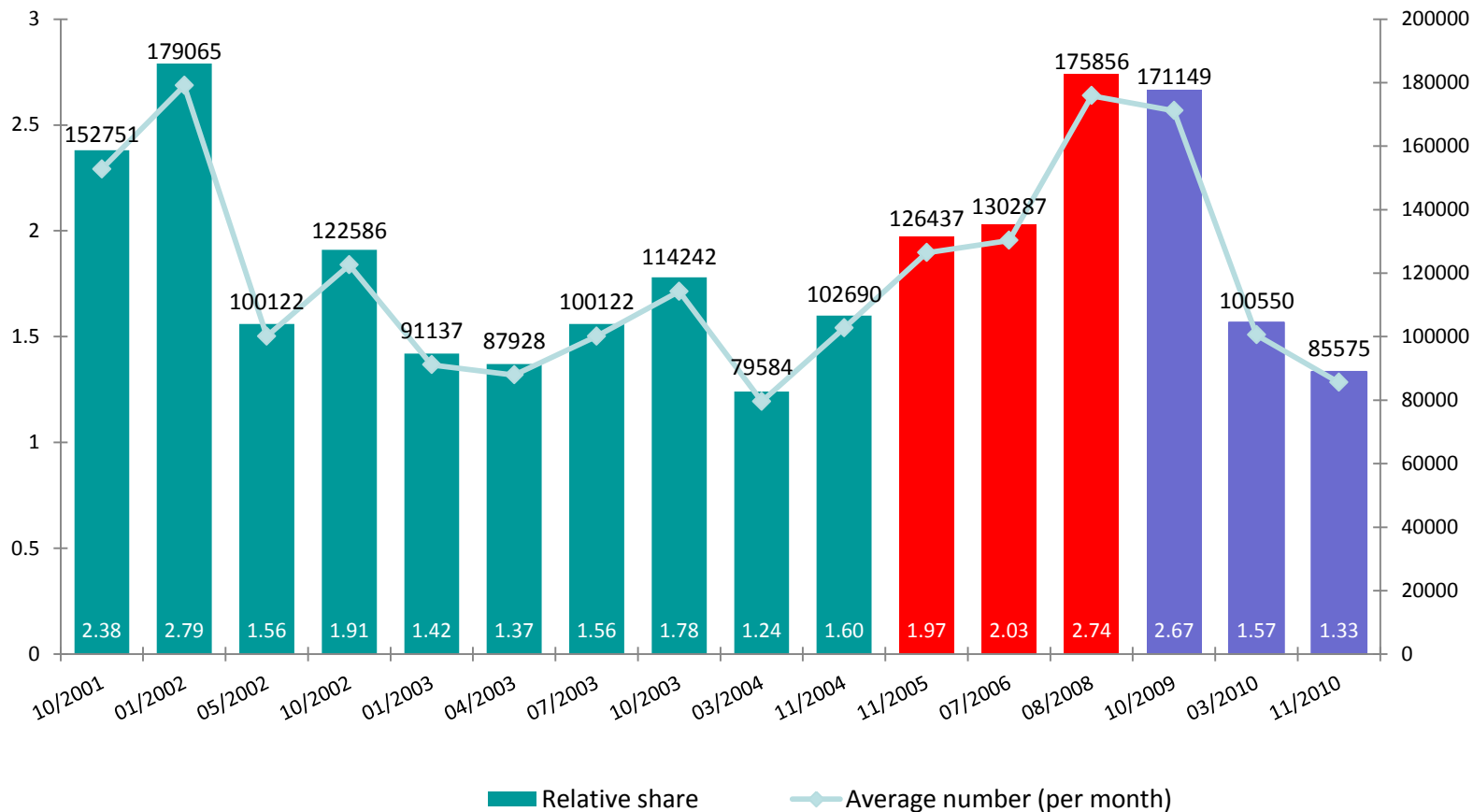
Relative share of people who have contacted the administration involved in corruption transactions (last 3 months)



	Bribe	No bribe	DK/NA
Sofia	21.4	69.6	8.9
Big city	7.9	89.2	2.9
Small town	10.2	83.1	6.8
Village	8.1	88.1	3.7
Men	10.8	83.8	5.4
Women	10.0	86.0	4.1
University	12.4	83.5	4.1
Collage	13.6	81.8	4.5
Secondary	11.3	83.7	4.9
Basic	3.6	91.1	5.4
Primary		100.0	
Average per capita household income (month)	<b>342</b>	287	

Base: respondents who have contacted the administration (N=481)

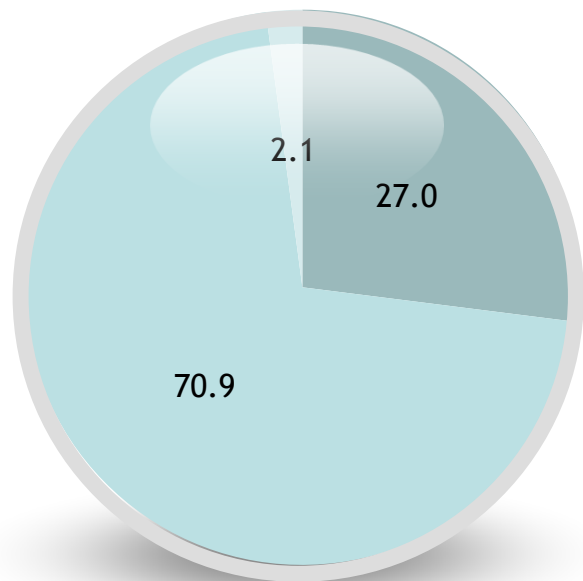
## Involvement in corruption transactions (general population, average % per month)



Base: all respondents (2010, N=1004)

## Corruption pressure (last year)

Officer showed directly or indirectly that money, favours or gifts are expected

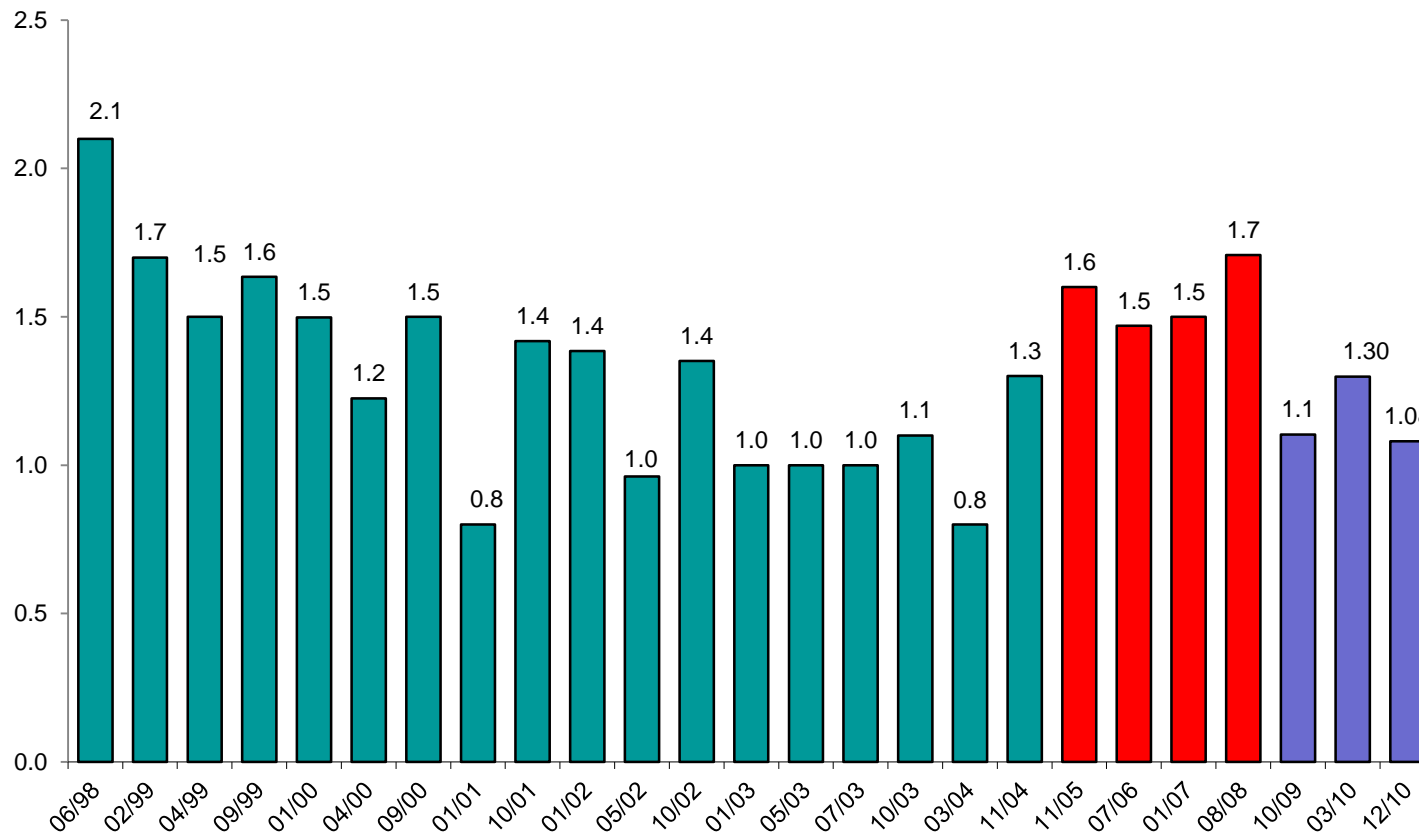


■ Experienced pressure ■ No pressure ■ DK/NA

Base: People who contacted the administration (N=481)

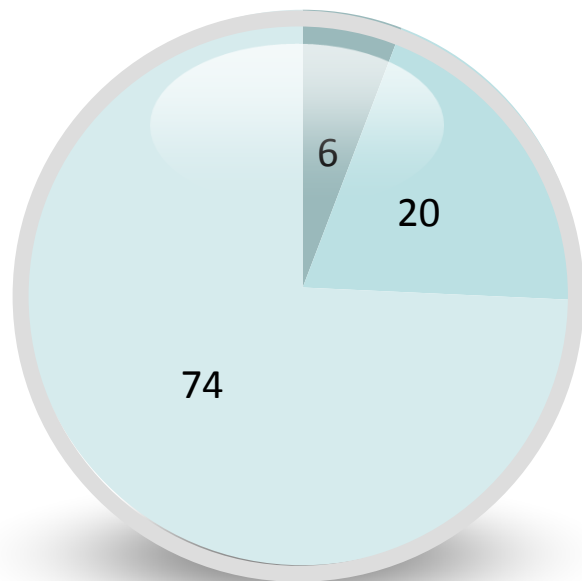
	Experienced pressure	No pressure	DK/NA
Sofia	43.9	53.0	3.0
Big city	27.2	69.6	3.3
Small town	28.2	71.8	
Village	19.0	79.7	1.3
Men	32.4	66.2	1.4
Women	23.1	74.4	2.6
University	31.9	66.4	1.7
Collage	24.1	75.9	
Secondary	31.3	66.3	2.4
Basic	9.9	87.3	2.8
Primary		100.0	

## Index of corruption pressure (1998-2010, min = 0, max = 10)



## Susceptibility to corruption (2010)

Readiness to accept bribe (as official) or give a bribe (as citizen)



- Would give or accept
- Undecided
- Neither give nor accept

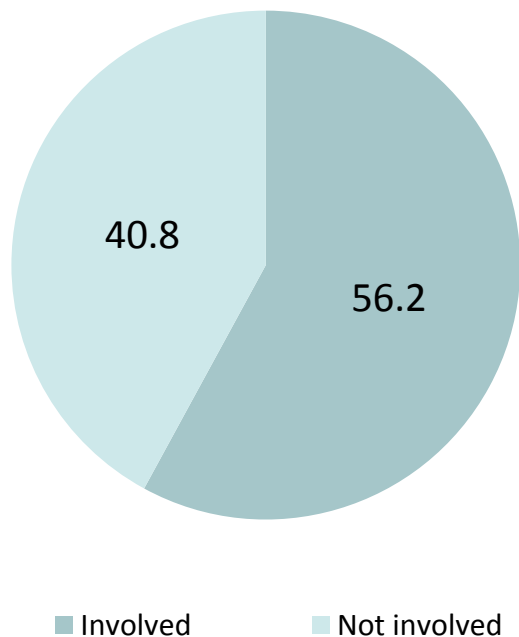
Base: All respondents (N=1004)

	Would give or accept	Undecided	Neither give nor accept
Sofia	8.5	25.4	66.1
Big city	4.3	20.4	75.2
Small town	5.7	16.4	78.0
Village	8.5	25.4	66.1
Men	10.3	19.5	70.2
Women	2.6	20.3	77.1
University	2.6	21.4	76.0
Collage	6.7	26.7	66.7
Secondary	7.6	20.2	72.2
Basic	3.8	18.2	78.0
Primary	10.0	6.7	83.3

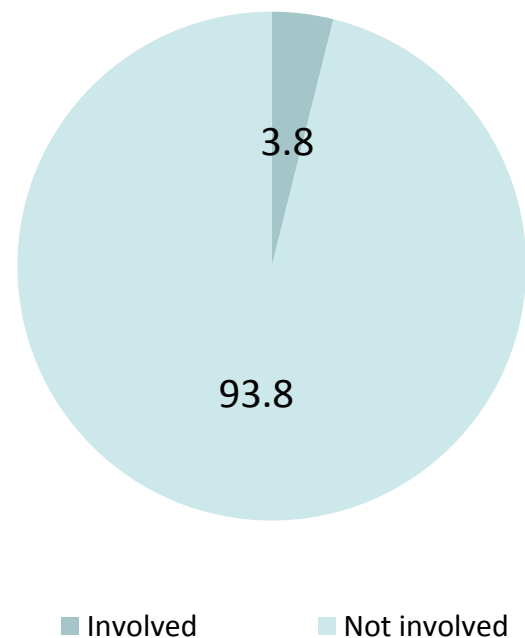


## Impact of corruption pressure on involvement in corruption transactions

Involvement in corruption, if pressure experienced

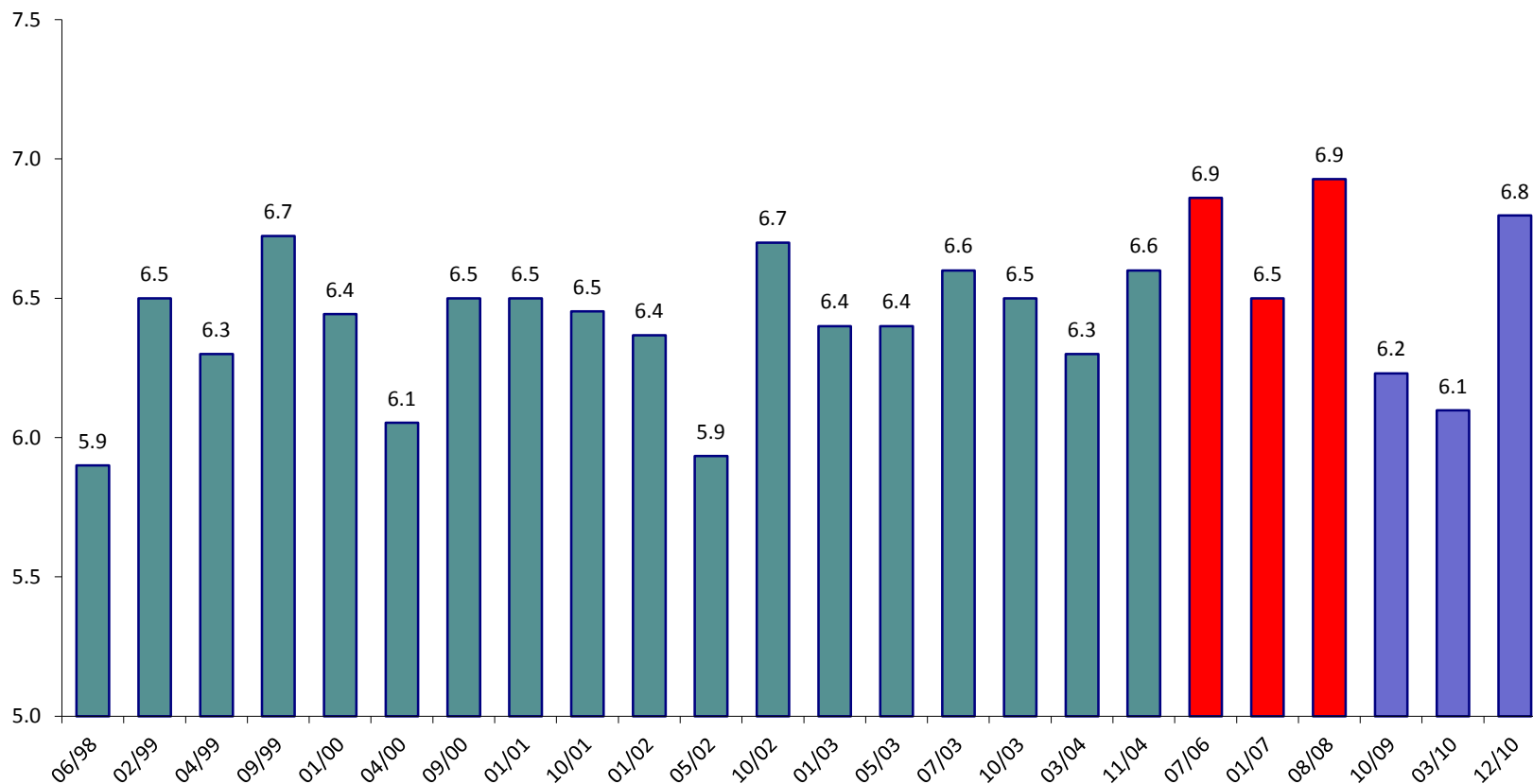


Involvement in corruption, if no pressure experienced



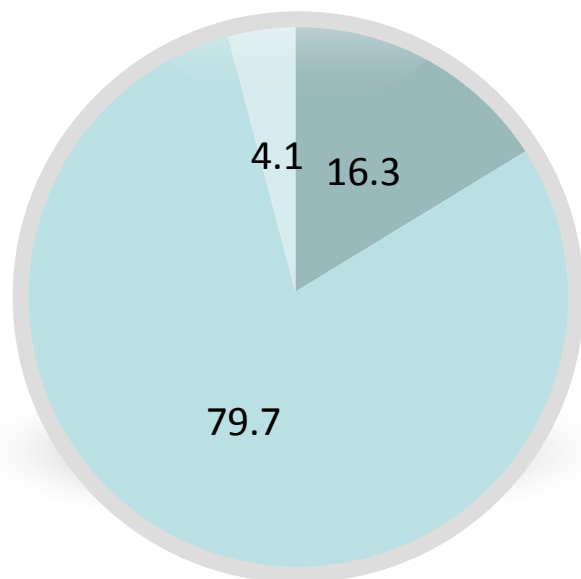
Base: respondents who have contacted the administration (N=481).,  $r=0.578$ ,  $p=0.000$

## Index of subjective perceptions of the spread of corruption (general population, min = 0, max =10)



Base: all respondents (N=1004, 2010)

## Business sector: Involvement in corruption transactions (last 3 months)



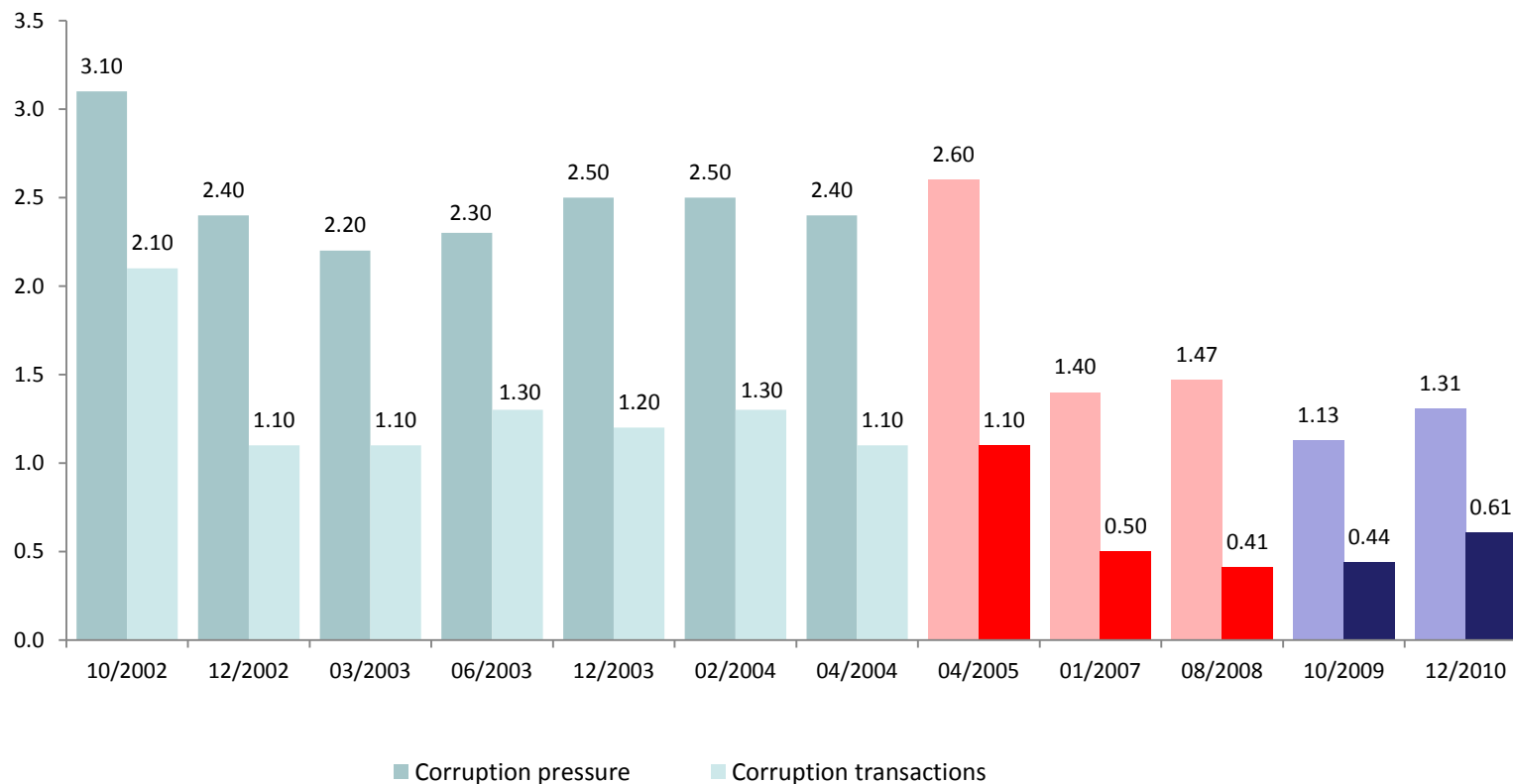
Relative share of people who have contacted the administration and have been involved in corruption transactions (last 3 months)

Average per month: 5.43%

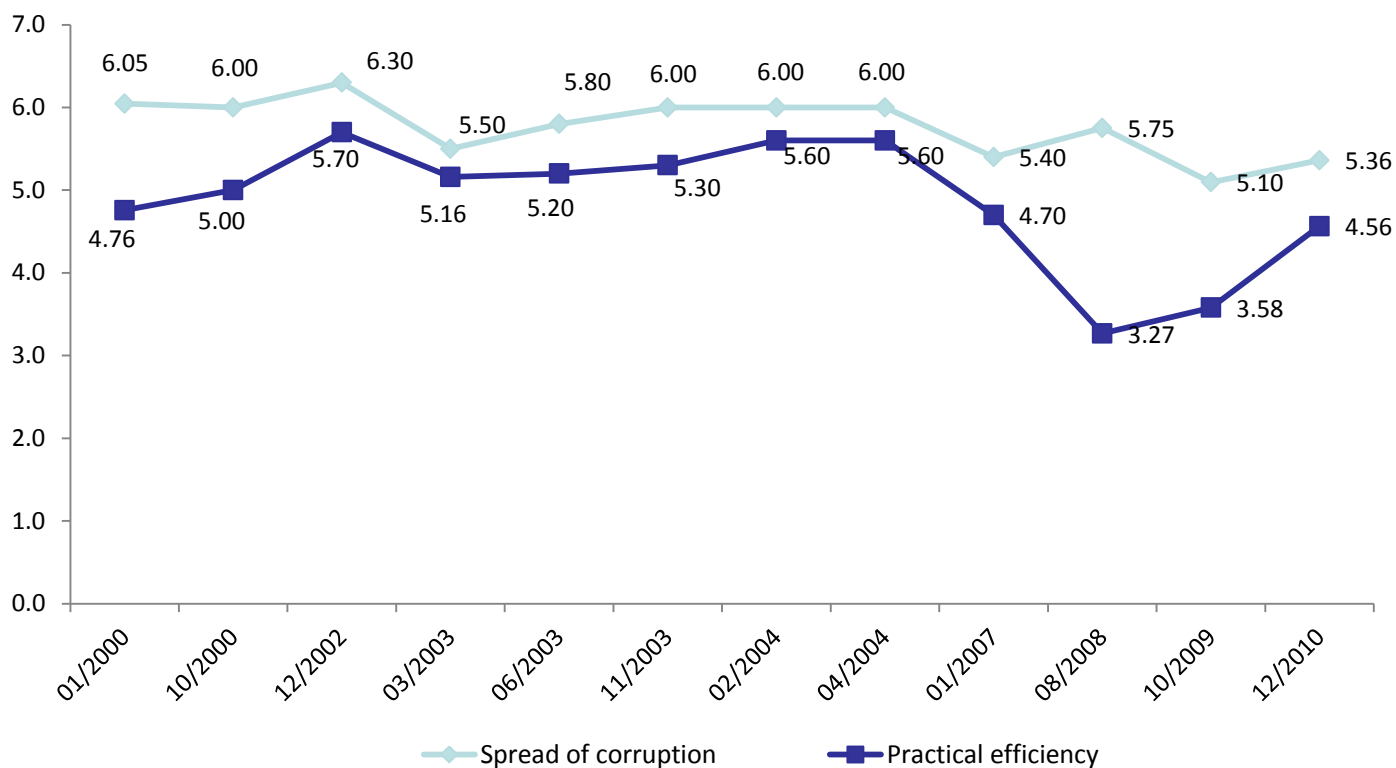
■ Involved ■ Not involved ■ DK/NA

Base: companies which have contacted the administration (N=246, 61.3%)

## Indexes of the level of corruption. Business sector (min=0, max =10)



## Indexes of perceptions of the spread of corruption. Business sector (min=0, max=10)



Thank you !

[www.csd.bg](http://www.csd.bg)