



Co-funded by the European Union

# REFUGEE INTEGRATION SYSTEM IN SPAIN AND CATALONIA

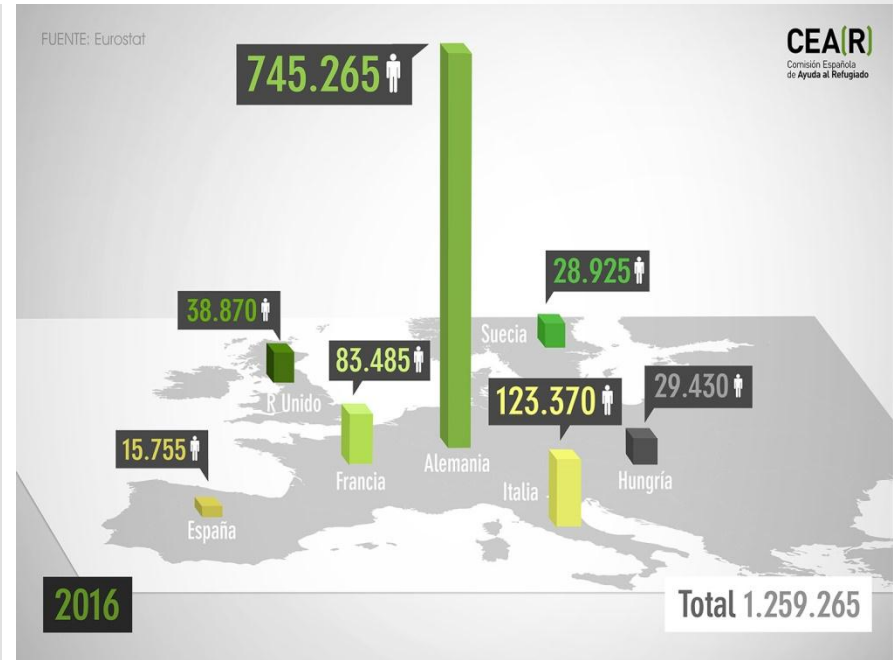
SOFIA, 30-31 MARCH 2017



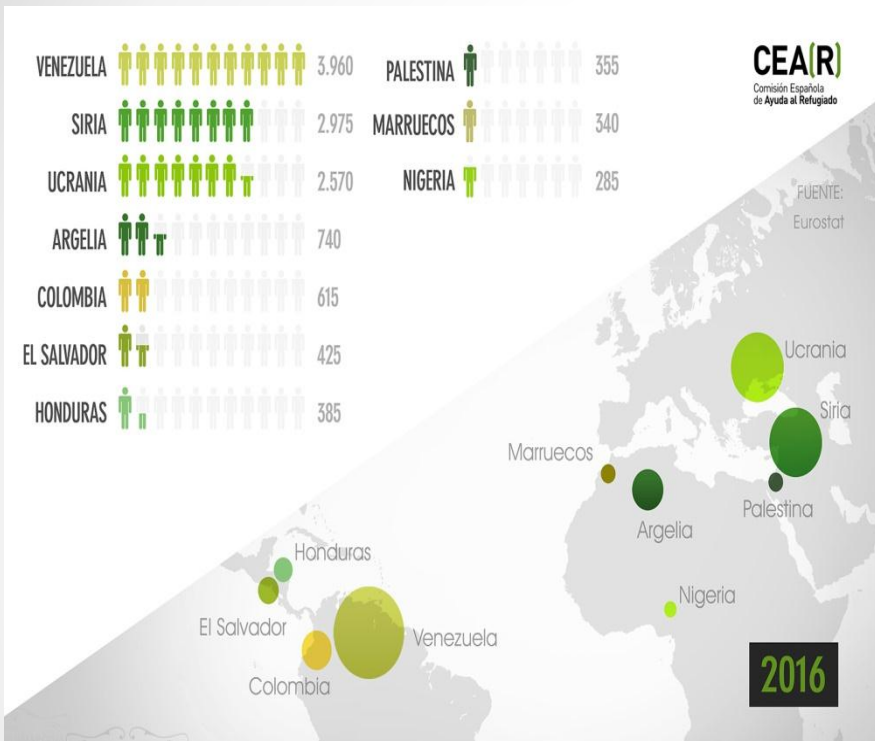
# SOME REFUGEE FIGURES IN SPAIN



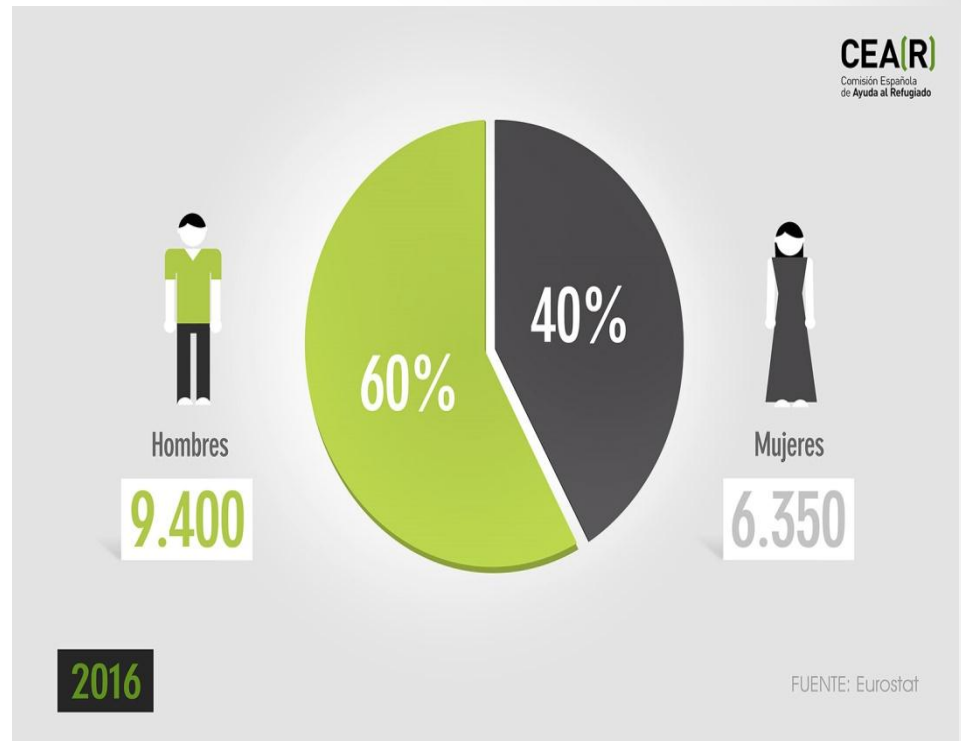
Evolution of asylum seekers in Spain



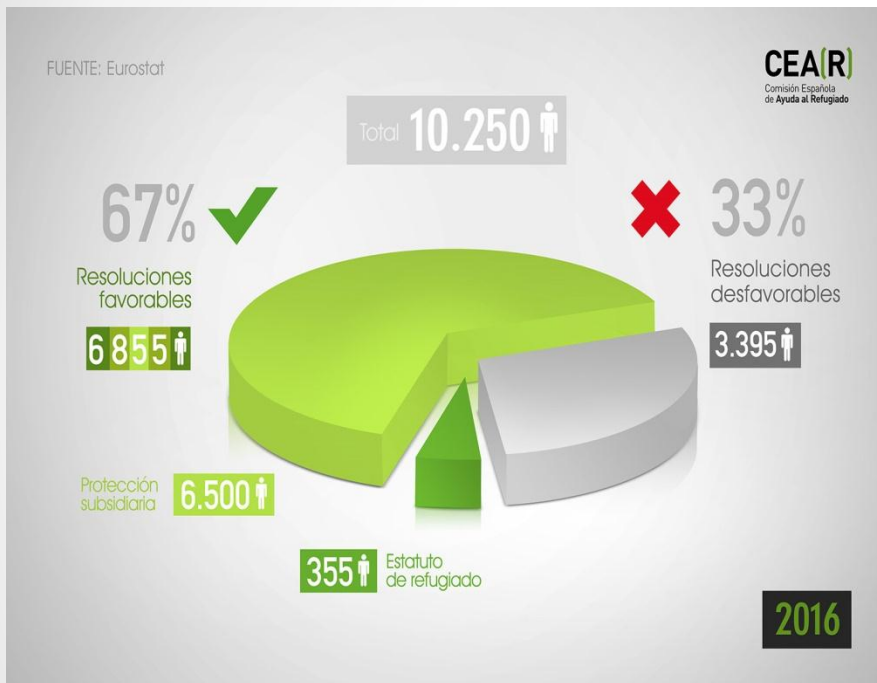
Asylum seekers by country in the EU 2016



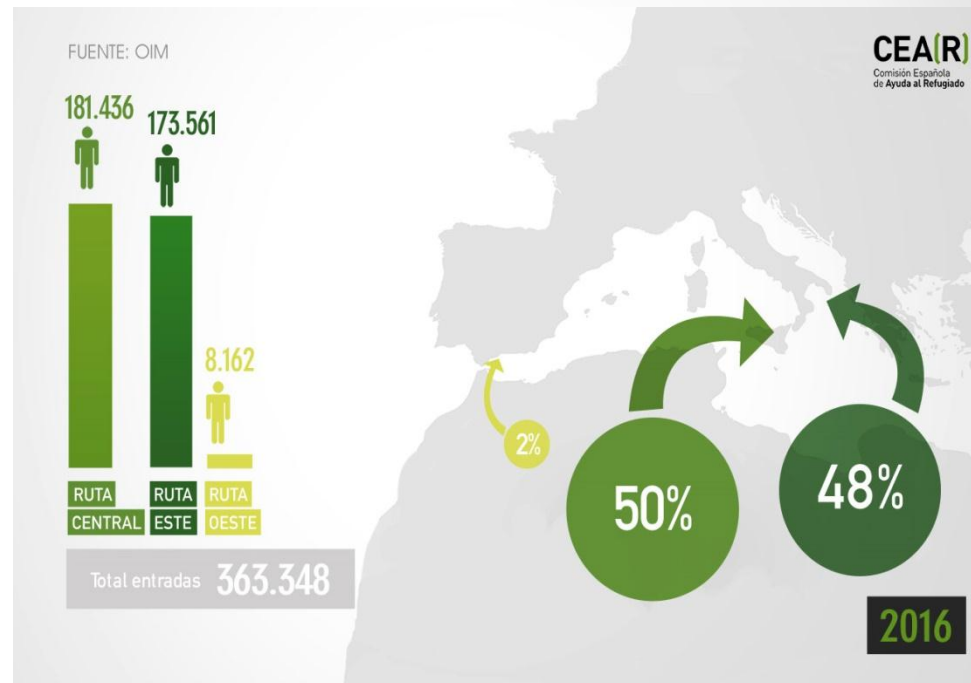
Asylum applications by nationality in Spain



Asylum applications by gender in Spain



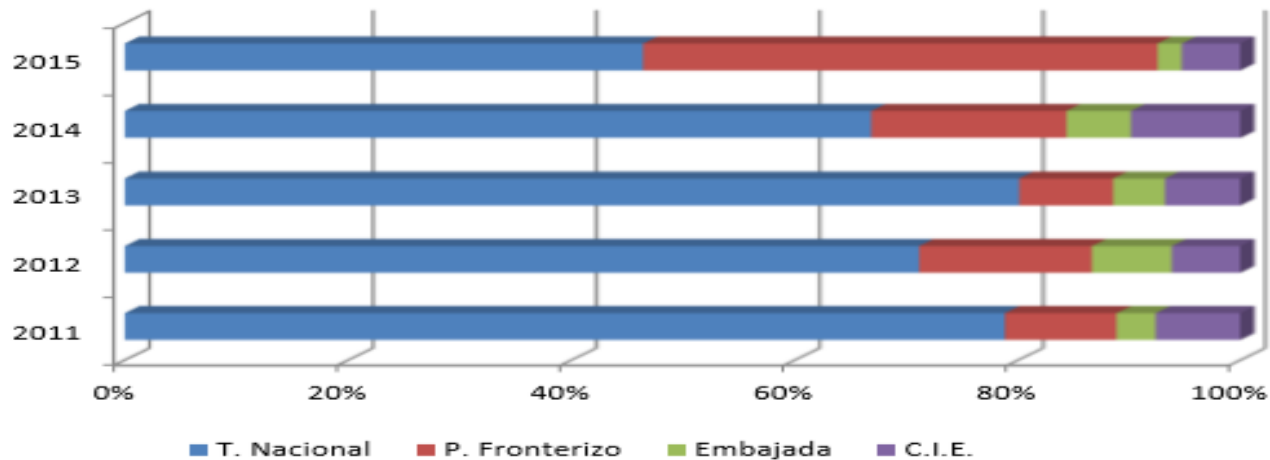
Positive and negative decisions in Spain



Entry routes in the European Union

# EVOLUCIÓN DE ASYLUM APLICACIONES BY PLACE OF PRESENTATION

EVOLUCIÓN DE LOS SOLICITANTES DE PROTECCIÓN INTERNACIONAL POR LUGAR DE PRESENTACIÓN DE LA SOLICITUD 2011-2015					
Año	T. Nacional	P. Fronterizo	Embajada	C.I.E.	Total
2011	2.697	344	120	261	3.161
2012	1.841	401	186	160	2.588
2013	3.615	381	211	306	4.513
2014	3.980	1.039	346	587	5.952
2015	6.913	6.862	327	785	14.887
<b>Totales</b>	<b>19.046</b>	<b>9.027</b>	<b>1.190</b>	<b>2.099</b>	<b>29.263</b>





# RELOCATION AND RESETTLEMENT FIGURES

**CEA(R)**

Comisión Española  
de Ayuda al Refugiado

Llegadas a  
Europa en 2017

25.170

Reubicados en  
la Unión Europea

14.759

Reasentados en  
la Unión Europea

14.438

Reubicados  
en España

878

Reasentados  
en España

289

Fallecidos  
en 2017

559



# THE CATALAN COMMISSION FOR REFUGEES ASISTANCE

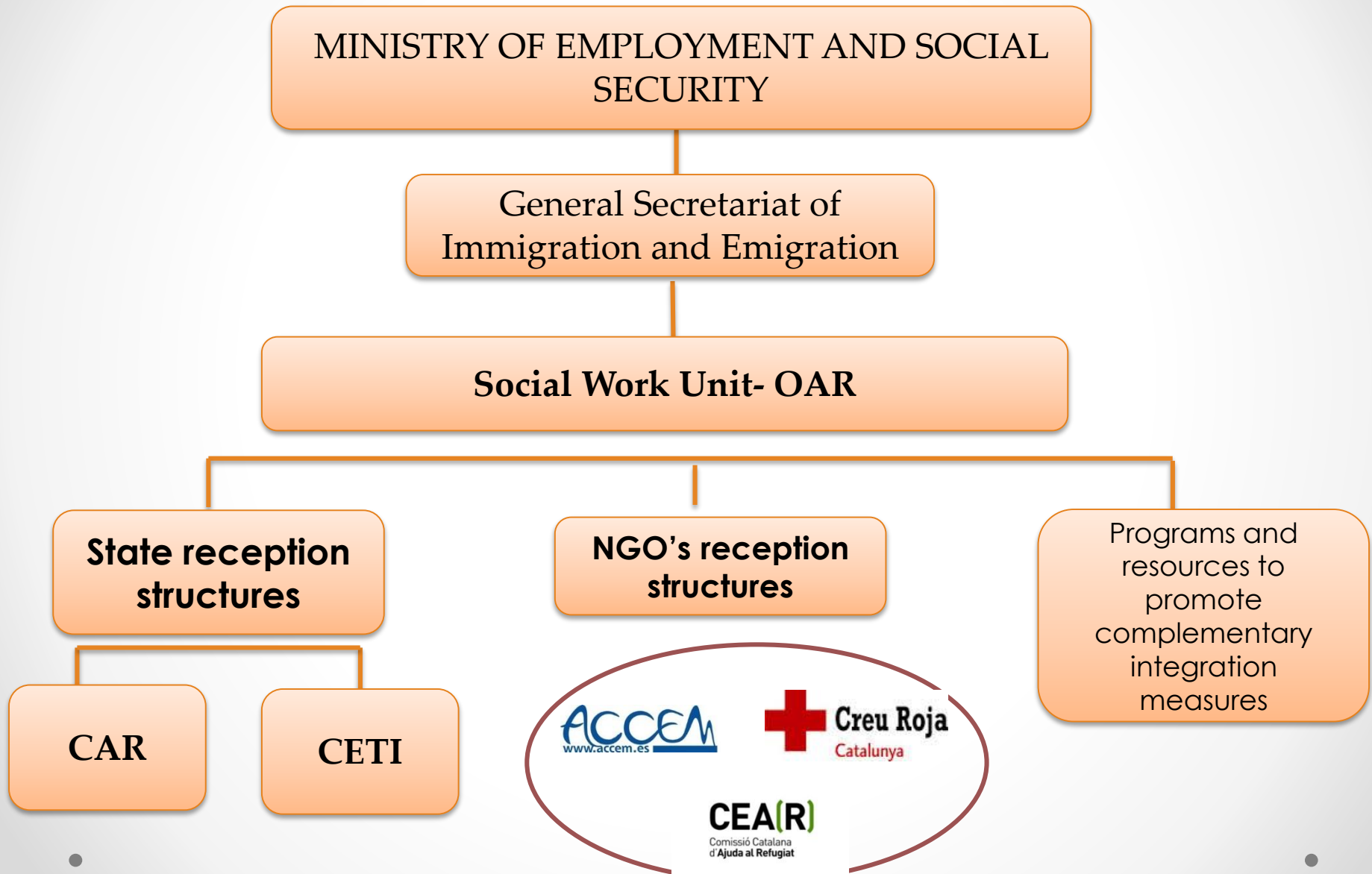
- WHAT IS CCAR?
- **Defense of the right to asylum** and the rights of refugees and migrants,
- **Promote their social integration** in Catalonia.
- Encourage debate violations of fundamental rights that need some protection.

This work is done through two broad lines of intervention:

- Assistance to refugees and immigrants through **social, legal, psychological and occupational programs.**
- Defense of the rights of refugees and immigrants through **political and social advocacy** and participation



# RECEPTION SYSTEM IN SPAIN





# REFUGEES RECEPTION SYSTEM: PHASES

## PRE PHASE

- First needs evaluation
- Referral to other resources
- Temporary accommodation (30 days)



## 1ST PHASE RECEPTION (6 – 9 months)

- Basic needs coverage (accommodation and meals)
- Social, psychological attention,
- Interpretation and translation
- Legal advice
- Language courses



## 2ND PHASE – INTEGRATION (6 – 11 months)

- Exit from reception structure: financial support
- **Temporary work permit**
- Pre-training and training workshops
- Homologation of educational titles
- Agreements with companies



## 3RD PHASE – WORK PROGRAMS (6 – 4 months)

- **Sporadic** financial support
- Focused on **labour insertion**

# INTEGRATION

**ASIL.CAT**

**Accem**



**Comissió Catalana d'Ajuda al Refugiat**



**Fundació ACSAR**



**Associació EXIL**



**Associació Catalana per a la Integració d'Homosexuals, Bisexuals i Transsexuals Immigrants**



**PEN Català**



**Sicar Cat**



**Creu Roja**



**Observing members**

**Comitè Català de l'ACNUR**



Thank you very much for your  
attention

